

2011 ORDER FORM A

| | | |
|------------------------|----------------------------|-----------------------|
| SCHOOL NAME | TEACHER CONTACT NAME | |
| ADDRESS | | |
| PHONE | MOBILE | FAX |
| EMAIL | | SCHOOL ORDER NO |
| PLEASE SEND WITH ORDER | | |

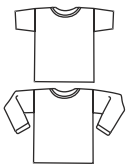
GARMENT COLOUR: PRINT COLOUR

PRINT POSITION(S): Prices only cater for a 1 colour print in 2 positions. Additional colours & positions will incur extra costs.
(more can be selected, but prices will be affected. Call for revised price).

LEFT BREAST
 CENTRE FRONT
 BACK
 LEFT SLEEVE
 RIGHT SLEEVE
 INDIVIDUAL NICKNAMES

DESIGN(S) REQUIRED - On separate page(s), please provide the design code numbers if selecting standard designs from our brochure, your class list & logo (if logo is needed). If providing your own design(s) or if you want to alter one of ours, please attach all details

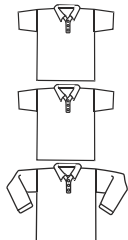
AUSSIE-MADE T-SHIRTS



| Approx. 1/2 chest measurement of garment (cm) | 10 | 12 | XS | S | M | L | XL | QTY | UNIT PRICE | TOTAL PRICE |
|---|----|----|----|----|----|----|----|-----|------------|-------------|
| 44 | 47 | 51 | 54 | 59 | 64 | 69 | | | | |
| SHORT SLEEVE T-SHIRT | | | | | | | | | | |
| LONG SLEEVE T-SHIRT | | | | | | | | | | |

MY ORDER IS OVER 50, SO PLEASE INCLUDE 1 FREE GARMENT (with same details as above) IN SIZE:

AUSSIE-MADE POLO SHIRTS



| Approx. 1/2 chest measurement of garment (cm) | 10 | 12 | XS | S | M | L | XL | XXL | QTY | UNIT PRICE | TOTAL PRICE |
|---|----|----|----|----|----|----|----|-----|-----|------------|-------------|
| 44 | 47 | 51 | 55 | 58 | 60 | 63 | 65 | | | | |
| 100% COTTON POLO | | | | | | | | | | | |
| POLY COTTON PIQUE POLO | | | | | | | | | | | |
| 100% COTTON LONG SLEEVE POLO | | | | | | | | | | | |

MY ORDER IS OVER 50, SO PLEASE INCLUDE 1 FREE GARMENT (with same details as above) IN SIZE:

COLLAR STRIPE Y/N
 COLLAR COLOUR (if applicable):.....
 STRIPE COLOUR (if applicable):.....
 TWIN OR SINGLE STRIPE (if applicable):.....

This order form & prices apply only to our standard, single-colour garments.
(except for optional striped collars on polos).
Prices include a one colour print in two positions (ie 1 colour front & 1 colour back)
If any further special trims/details are required, please attach further information & be aware that extra costs will be incurred.

| | |
|------------------|--|
| Total Amount Due | |
|------------------|--|

SCHOOL NAMETEACHER CONTACT NAME

ADDRESS

PHONE MOBILE FAX

EMAIL SCHOOL ORDER NO

PLEASE SEND WITH ORDER

GARMENT COLOUR: PRINT COLOUR

HOOD LINING COLOUR (Aussie made garments only):

PRINT POSITION(S): Prices only cater for a 1 colour print in 2 positions. Additional colours & positions will incur extra costs. (more can be selected, but prices will be affected. Call for revised price).

LEFT BREAST CENTRE FRONT BACK LEFT SLEEVE RIGHT SLEEVE INDIVIDUAL NICKNAMES

DESIGN(S) REQUIRED - On separate page(s), please provide the design code numbers if selecting standard designs from our brochure, your class list & logo (if logo is needed). If providing your own design(s) or if you want to alter one of ours, please attach all details

AUSSIE-MADE WINDCHEATERS & JACKETS

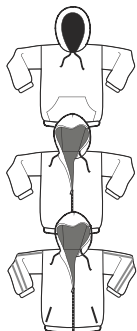
| Approx. 1/2 chest measurement of garment (cm) | GARMENT CODE NO. | 10 | 12 | XS | S | M | L | XL | | QTY | UNIT PRICE | TOTAL PRICE |
|---|------------------|----|----|----|----|----|----|----|--|-----|------------|-------------|
| | | 48 | 50 | 52 | 57 | 62 | 67 | 72 | | | | |
| HOODED SWEATSHIRT (POLY COTTON FLEECE) | | | | | | | | | | | | |
| HOODED JACKET (POLY COTTON FLEECE) | | | | | | | | | | | | |
| COLLEGE JACKET (POLY COTTON FLEECE) | | | | | | | | | | | | |
| COLLARED JACKET (POLY COTTON FLEECE) | | | | | | | | | | | | |

| | | | |
|--|--|--|--|
| HOODED SWEATSHIRT Code: 008 A Bottom band, Hand warmer Code: 008 B No band, Hand warmer | HOODED JACKET Code: 008 ZD Bottom band Side Pocket Code: 008 Ze No band, with cord. Side Pocket | COLLEGE JACKET Code: 008zip Zip closure. Side Pocket | COLLARED JACKET Code: 008 Z Zip closure. Side Pocket |
|--|--|--|--|

*Band refers to a stretchy band of rib at the bottom of a garment. Garments with no band are just hemmed.

MY ORDER IS OVER 50, SO PLEASE INCLUDE 1 FREE GARMENT (with same details as above) IN SIZE:

IMPORTED JUMPERS & JACKETS



| Approx. 1/2 chest measurement of garment (cm) | 10 | 12 | 14 | XS | S | M | L | XL | XXL | QTY | UNIT PRICE | TOTAL PRICE |
|---|----|----|----|----|----|----|----|----|-----|-----|------------|-------------|
| | 50 | 52 | 55 | 57 | 59 | 61 | 63 | 65 | 67 | | | |
| HOODED SWEATSHIRT (POLY COTTON FLEECE) | | | | | | | | | | | | |
| HOODED JACKET (POLY COTTON FLEECE) | | | | | | | | | | | | |
| STRIPED SLEEVE HOODIE (POLY COTTON FLEECE) | | | | | | | | | | | | |

MY ORDER IS OVER 50, SO PLEASE INCLUDE 1 FREE GARMENT (with same details as above) IN SIZE:

This order form & prices apply only to our standard, single-colour garments. (except for standard striping on jackets as described).
 Prices include a one colour print in two positions (ie 1 colour front & 1 colour back)
 If any further special trims/details are required, please attach further information & be aware that extra costs will be incurred.

| | |
|------------------|--|
| Total Amount Due | |
|------------------|--|

HOW TO PLACE AN ORDER

1) Select Your Designs.

On a separate page(s), please provide the design code numbers if you're selecting standard designs from our brochure, your class list & school logo (if needed). If you are providing your own designs or would like one of ours altered, please provide all details. If you are having individual names on jumpers, please provide your name list (10 character limit per name) with corresponding sizes & the position where they are to be applied.

2) Find the appropriate order form(s) & fill out.

Please select the form(s) in this brochure appropriate to you. To ensure a correct fit, ask us to send a sample set of sizes for the students to try on.

These forms only cater for 1 or 2 single-colour prints on standard garments. If you have special requirements such as special trims, embroidery, multi-coloured prints, more than 2 prints or anything else, please CLEARLY note them in the space provided or on an accompanying piece of paper. Such changes will incur extra costs, so don't fill in unit prices on your form from the provided tables. You will need to call for a quote.

3) Obtain & attach an official school purchase order form.

Schools that provide an official school purchase order are entitled to a 28 day account. Schools that don't provide this form must make arrangements to pay a 50% deposit when ordering, then pay the balance upon completion of the job, before the goods are despatched.

4) Get all details of your order to us.

Fax or post your order to us at: **AUSSIE GOLD & BEST ON GROUND, Suite 1/15 Howe St, Osborne Park, WA 6017. Fax: (08) 9244 3466**

We strongly recommend that you get your order to us as early as you can. Your students will have more time to wear their garments throughout their final year & it will ensure no last minute panic before graduation dates.

Please feel free to call & talk to one of our sales people if you require assistance with your order.

2011 LEAVERS PRICE LIST

AUSSIE-MADE T-SHIRTS

| GARMENT | QUANTITY 25-50 | QUANTITY 50+ |
|----------------------|----------------|--------------|
| SHORT SLEEVE T-SHIRT | \$18.50 | \$17.00 |
| LONG SLEEVE T-SHIRT | \$20.50 | \$19.50 |

Prices above are for WHITE t-shirts only. For other colours, please add an extra \$1.25ea

SHORT SLEEVE T-SHIRT COLOURS: Black, white, navy, azure turquoise, bayside marine, purple, amethyst, red, cinnamon, orange, electric blue, mediterranean sand, jazz blue, gold, wine, mineral grey, powder blue, yellow, sapphire, cherry, lime, jade, emerald.

LONG SLEEVE T-SHIRT COLOURS: Black, white, navy, red, electric blue, gold, wine, mineral grey, sapphire, jade.

AUSSIE-MADE POLO SHIRTS

| GARMENT | QUANTITY 25-50 | QUANTITY 50+ |
|-------------------------|----------------|--------------|
| COTTON POLO SHIRT | \$23.95 | \$22.95 |
| PIQUE POLO SHIRT | \$23.95 | \$22.95 |
| COTTON LONG SLEEVE POLO | \$25.50 | \$24.50 |

Prices above are for WHITE polos only. For other colours, please add an extra \$1.25ea

COTTON SHORT & LONG SLEEVE POLO COLOURS: Black, white, navy, mineral grey, sapphire.

PIQUE POLO COLOURS: Black, white, navy, antique green, electric blue, gold, ruby, cranberry, jade, blue manna, powder blue, cerise.

| | |
|-----------------|--------------------|
| STRIPED COLLARS | + \$1.80 per shirt |
|-----------------|--------------------|

AUSSIE-MADE SWEATSHIRTS & JACKETS

| GARMENT | QUANTITY 25-50 | QUANTITY 50+ |
|--------------------|----------------|--------------|
| HOODED SWEATSHIRTS | \$40.00 | \$39.00 |
| HOODED JACKET | \$49.00 | \$48.00 |
| COLLEGE JACKET | \$59.00 | \$57.50 |
| COLLARED JACKET | \$49.00 | \$48.00 |

AUSSIE GOLD SWEATSHIRT & JACKET COLOURS: Black, white, navy, antique green, electric blue, mineral grey, gold, wine, sapphire, jade, powder blue, baby pink.

HOOD LINING COLOURS: White, light bottle, navy, light emerald, silver, purple, gold, maroon, royal, red.

IMPORTED HOODED SWEAT COLOURS: Khaki, pink, emerald, navy, snow marle, brown, white, red, sky, black, grey marle.

IMPORTED HOODED JACKET COLOURS: Beige, royal, khaki, pink, navy, emerald, brown, white, red, sky, black, grey marle.

IMPORTED STRIPE SLEEVE HOODIE COLOURS: Black/gold, white/black, navy/sky, red/white, grey marle/navy, charcoal/grey, black/red, white/emerald

IMPORTED JUMPERS & JACKETS

| GARMENT | QUANTITY 25-50 | QUANTITY 50+ |
|----------------------|----------------|--------------|
| HOODED SWEATSHIRTS | \$30.65 | \$29.50 |
| HOODED JACKET | \$31.65 | \$30.50 |
| STRIPE SLEEVE HOODIE | \$37.75 | \$36.50 |

Imported hoodies need a grey base when printed which will incur an extra cost

| | |
|----------------------|-----------------|
| INDIVIDUAL NICKNAMES | \$6.65 per name |
|----------------------|-----------------|

Prices are based on a minimum order of 25.

Orders less than 25 will incur a small order fee.

1-14: \$100.00

15-24: \$75.00

